

40 GREAT GIFT IDEAS FOR HIM, HER AND HOME

SEATTLE & HOMES LIFESTYLES™

Comfort
and **JOY**

Inspiring ideas,
timeless traditions

SCANDINAVIAN
CHRISTMAS

COLONIAL LIVING
ON WHIDBEY ISLAND

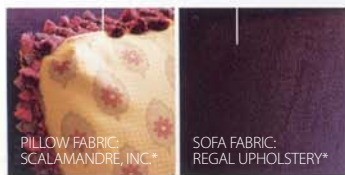
A CHOCOLATE
LOVER'S GUIDE
TO SEATTLE

FEATURING DIXIE STARK
home couture
& consultation


the solution }



Interior designer Dixie Stark of Digs Home Couture used a warm color palette to make the room more alluring, covering the floors and walls in pale, neutral hues to give the illusion of space. Traditional curtains were replaced with an embroidered sheer draped atop a layer of silk -- lightweight fabrics that created richness and depth without being oppressive.



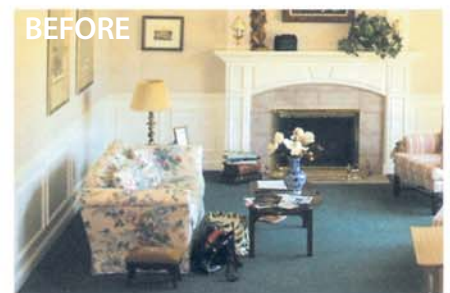
Stark combined a variety of textures and fabrics to produce an intimate, lush atmosphere without crowding the room. "I wanted to use layers to make the room opulent and rich, creating interest without being busy," notes Stark, who used variations of red to tie the space together. To fit the awkward proportions of the room, the designer introduced a taller floor lamp and had the sofas custom made with higher arms but a shorter length and depth.

**Available through designers and architects.*

WRITTEN BY THEA NYBERG PHOTOGRAPHS BY BRIAN FRANCIS

the challenge: An overly cool color palette and discordant furniture made the living room in Barry and Debra Caldwell's Bellevue home feel empty and less than inviting. The room's cubelike proportions —14 feet square, and 14 feet high— felt both cramped and daunting. Heavy curtains obscured the generous expanse of leaded-glass windows, while dark teal carpeting and brass detailing revealed the interior's 1980s origins.

Send before-and-after shots, along with a self-addressed stamped envelope, to Room for Improvement, Seattle Homes & Lifestyles, 1221 E. Pike St., Suite 305, Seattle, WA 98122.



COURTESY BARRY & DEBRA CALDWELL